



Inspection covers

Channel drainage



Alu proficiency

www.metalprojektpolska.com

Sales contact:

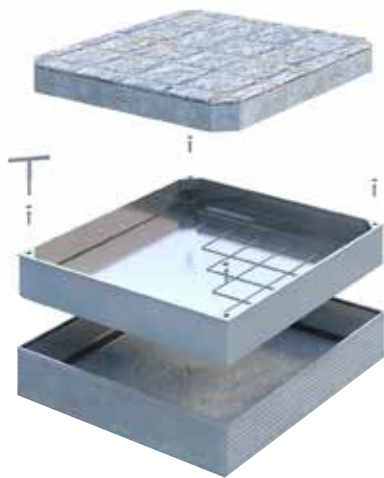
Carl Jansen
carl.j@metalprojektpolska.com
GSM +32 (0)499 513 344

Production:

MPP Metal Projekt Polska
Ul. Zarnowiecka 5
42-445 Szczekociny
Poland
T +48 (0)609 250 110
info@metalprojektpolska.com

Website - www.metalprojektpolska.com
Facebook - MPP Metal Projekt Polska
Linkedin - Metal Projekt Polska





Inspection covers

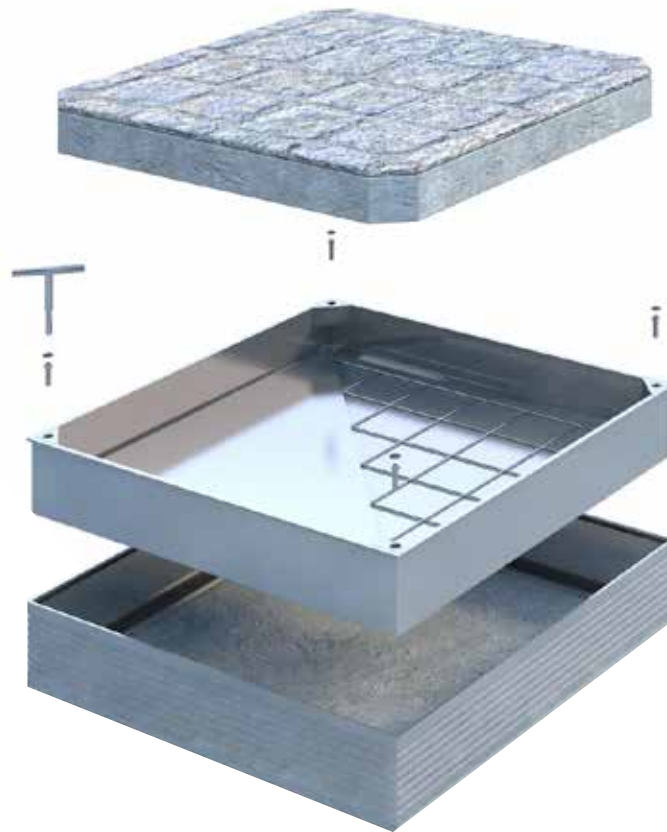
DC Light-Line	5
DC Pro-Line	6
DC Euromaster	7
DC Tube-Light-Line	8
DC Tube-Pro-Line	9
DC Multi-Line	10
Stahlo Deck Light-Line	11
Stahlo Deck Pro-Line	12
Top Pro-Line	13
How to install	14
Extra Info	15



Channel drainage

Alu Side Drain	17
Alu Side Line	20
MPP Polymer drain	22
Alu Side Light-Line	24
Galva Side Line	25
How to install	26
Extra Info	27

Inspection covers



DC Light-Line

Heights: 40 - 60 - 80 - 100 mm

The DC Light-Line is an aluminum recessed cover with the cover placed freely in the outer frame.

The recessed covers are expertly provided with two seals: one seal at the base and a T rubber seal incorporated into the outer frame.

The T rubber seal has three functions.

- It prevents dirt between the cover and the frame.
- The rubber's elastic effect avoids tension between the cover and the frame.
- It offers an additional smell barrier.



Smell proof

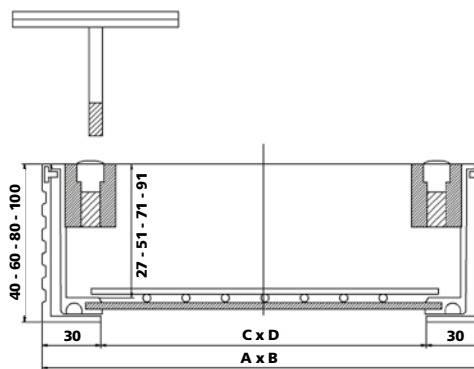


Waterproof



Information and properties

- Frame and cover are made of extruded aluminum profile and are easy to open with the lifting keys.
- Application: outdoor use for balconies, garage doors, patios, etc.
- The cover is not screw tight.
- The recessed cover is standard equipped with a reinforcement mesh.
- The bottom plate is made of a 3mm galvanized steel plate (on request: bottom plate in 3mm aluminum).



DC Light-Line		DC-40 L	DC-60 L	DC-80 L	DC-100 L
Frame size A x B (mm)	Clear opening C x D (mm)	Weight (kg)	Weight (kg)	Weight (kg)	Weight (kg)
300 x 300	240 x 240	3.56	3.86	4.49	4.94
400 x 400	340 x 340	5.73	6.08	6.80	7.43
500 x 500	440 x 440	8.56	8.94	10.09	10.83
600 x 600	540 x 540	11.96	12.25	13.52	14.41
700 x 700	640 x 640	15.61	15.96	17.36	18.39
800 x 800	740 x 740	19.93	20.33	21.86	23.04
900 x 900	840 x 840	24.73	25.11	26.76	28.09
1000 x 1000	940 x 940	30.38	30.73	32.52	33.99
Suitable for tiles		✓	✓		
Suitable for tiles and pavers				✓	✓

Custom made: within 14 days of ordering

* Concrete load min. 4 cm

DC Pro-Line

Heights: 40 - 60 - 80 - 100 mm

The DC Pro-Line is an aluminum recessed cover with the cover screwed on to the outer frame.

The recessed covers are expertly provided with three seals: two seals at the base and a T rubber seal incorporated into the outer frame.

The T rubber seal has three functions.

- It prevents dirt between the cover and the frame.
- The rubber's elastic effect avoids tension between the cover and the frame.
- It offers an additional smell barrier.



Gas proof



Smell proof

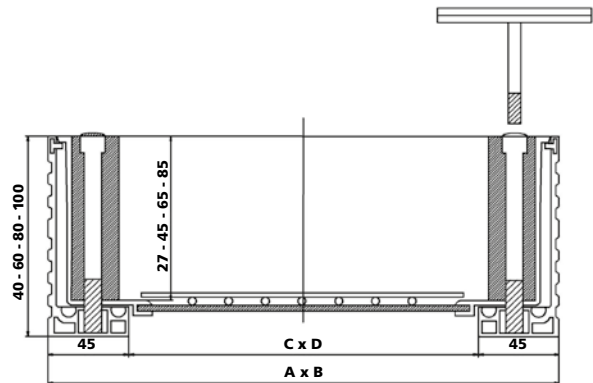


Waterproof



Information and properties

- Frame and cover are made of extruded aluminum profile and are easy to open with lifting keys.
- Application: indoor and outdoor use.
- The cover is screw tight.
- The recessed cover is standard equipped with a reinforcement mesh.
- The bottom plate is made of a 3mm galvanized steel plate (on request: bottom plate in 3mm aluminum).



DC Pro-Line		DC-40 P	DC-60 P	DC-80 P	DC-100 P
Frame size A x B (mm)	Clear opening C x D (mm)	Weight (kg)	Weight (kg)	Weight (kg)	Weight (kg)
300 x 300	210 x 210	3.79	4.11	5.21	5.82
400 x 400	310 x 310	5.96	6.27	7.56	8.31
500 x 500	410 x 410	8.59	9.06	10.37	11.25
600 x 600	510 x 510	12.00	12.30	13.80	14.83
700 x 700	610 x 610	15.66	15.96	17.65	18.81
800 x 800	710 x 710	19.98	20.28	22.15	23.45
900 x 900	810 x 810	24.76	24.99	27.06	28.50
1000 x 1000	910 x 910	30.44	30.56	32.82	34.40
Suitable for tiles		✓	✓		
Suitable for tiles and pavers				✓	✓

Custom made: within 14 days of ordering

* Concrete load min. 4 cm

DC Euromaster

Heights: 80 - 100 - 140 mm

In order to meet the demand of our customers for the design a recessed cover that could easily comply with the load class as specified in EN-124, in this regard our R&D department did not only succeed in achieving the requested standard, but was furthermore also able to considerably limit the weight of the floor hatch.

The Euromaster series is fitted with a double floor system.

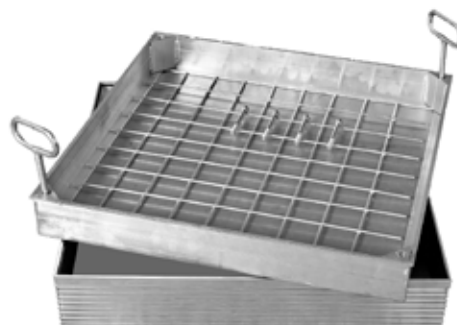
This application makes it possible to lift the filling cover from the frame first, after which the double floor becomes visible and this can also be removed easily by using the same lift keys.

The DC Euromaster is an aluminum recessed cover, in which the filling cover is screwed to the outer frame.

The recessed covers are equipped with three seals in accordance with the latest engineering standards. Two seals at the base and a T rubber incorporated in the side of the outer frame.

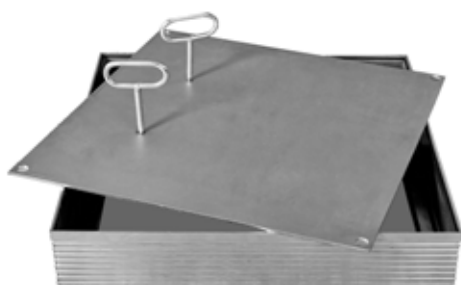
The T rubber has three functions.

- Prevents dirt residue between the filling cover and the frame.
- Due to the rubber's elasticity, tension is avoided between the filling cover and the frame.
- It provides an additional odour barrier



Information and properties

- Frame and filling cover are made of extruded aluminum profiles and can be easily opened with lifting keys.
- Application: Indoor and outdoor use.
- The recessed cover is screw-tight.
- As standard, the floor hatch is fitted with a 3 mm galvanized steel plate and reinforcement mesh and the removable double bottom is made of a 6 mm galvanized steel plate.



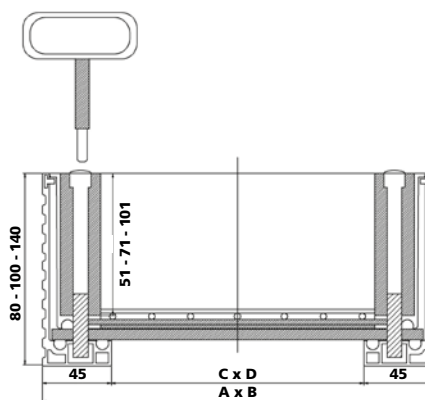
Gas proof



Smell proof



Waterproof



DC Euromaster		DC-80 EM	DC-100 EM	DC-140 EM
Frame size A x B (mm)	Clear opening C x D (mm)	Weight (kg)	Weight (kg)	Weight (kg)
300 x 300	210 x 210	10.28	11.01	12.47
400 x 400	310 x 310	17.31	18.78	21.72
500 x 500	410 x 410	25.06	26.07	28.09
600 x 600	510 x 510	35.97	37.12	39.42
700 x 700	610 x 610	47.37	48.66	51.24
800 x 800	710 x 710	61.58	63.00	65.84
900 x 900	810 x 810	77.55	79.12	82.26
1000 x 1000	910 x 910	95.77	97.47	100.87
Suitable for tiles and pavers		✓	✓	✓

Load max*

Custom made: within 14 days of ordering

* Concrete load min. 4 cm

DC Tube Light-Line

Heights: 60 - 80 - 100 mm

The DC Tube Light-Line is an aluminum recessed cover with the cover placed freely in the outer frame. It also has an adapter connecting the recessed cover with a PVC outlet pipe.

The advantage of the pre-mounted adapter at the bottom of the frame is that it is not necessary to set the recessed cover in concrete before pouring concrete on the rest of the surface, for example. This saves the contractor a huge amount of time. The recessed covers are expertly provided with two seals: one seal at the base of the recessed cover and a T rubber seal incorporated into the outer frame's side.

The T rubber has three functions.

- It prevents dirt between the cover and the frame.
- The rubber's elastic effect avoids tension between the cover and the frame.
- It offers an additional smell barrier.



Smell proof

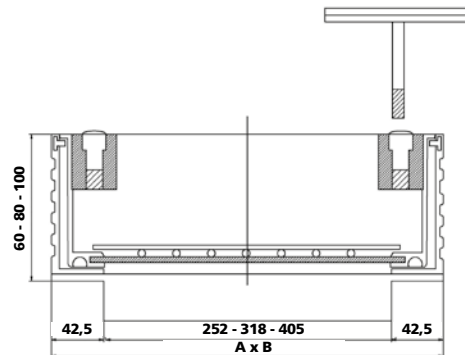


Waterproof



Information and properties

- Frame and cover are made of extruded aluminum profile and are easy to open with the lifting keys. At the bottom of the frame, a pre-mounted adapter can be connected to a PVC outlet pipe (diam. 250, 315, 400mm).
- Application: outdoor use.
- The cover is not screw tight.
- The recessed cover is standard equipped with a reinforcement mesh.
- The bottom is made of a 3mm galvanized steel plate (on request: bottom plate in 3mm aluminum).



DC Tube-Light-Line		DC-60 TLL	DC-80 TLL	DC-100 TLL
Diameter PVC Pipe (mm)	Frame size A x B (mm)	Weight (kg)	Weight (kg)	Weight (kg)
252	400 x 400	7.38	8.10	8.72
318	500 x 500	10.97	12.12	12.86
405	600 x 600	15.16	16.44	17.32
Suitable for tiles		✓		
Suitable for tiles and pavers			✓	✓

Custom made: within 14 days of ordering

* Concrete load min. 4 cm

DC Tube Pro-Line

Heights: 60 - 80 - 100 mm

The DC Tube Pro-Line is an aluminum recessed cover with the cover screwed on to the outer frame. It also has an adapter connecting the recessed cover with a PVC outlet pipe.

The advantage of the pre-mounted adapter at the bottom of the frame is that it is not necessary to set the recessed cover in concrete before pouring concrete on the rest of the surface, for example. This saves the contractor a huge amount of time.

The recessed covers are expertly provided with three seals: double seal at the base and a T rubber seal incorporated into the outer frame's side.

The T rubber has three functions.

- It prevents dirt between the cover and the frame.
- The rubber's elastic effect avoids tension between the cover and the frame.
- It offers an additional smell barrier.



Gas proof



Smell proof

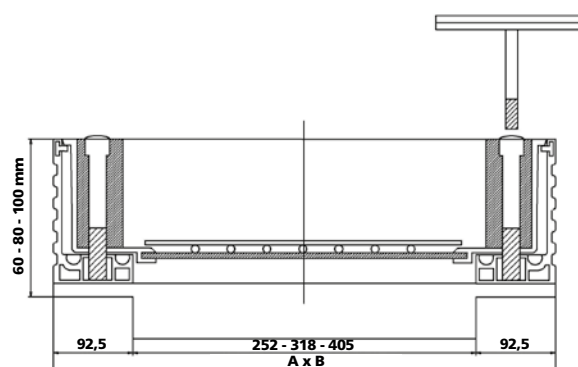


Waterproof



Information and properties

- Frame and cover are made of extruded aluminum profile and are easy to open with lifting keys. At the bottom of the frame, a pre-mounted adapter can be connected to a PVC outlet pipe (diam. 250, 315, 400mm).
- Application: indoor and outdoor use.
- The cover is screw tight.
- The inspection cover is standard equipped with a reinforcement mesh.
- The bottom is made of a 3mm galvanized steel plate (on request: bottom plate in 3mm aluminum).



DC Tube-Pro-Line		DC-60 TPL	DC-80 TPL	DC-100 TPL
Diameter PVC Pipe (mm)	Frame size A x B (mm)	Weight (kg)	Weight (kg)	Weight (kg)
252	400 x 400	7.56	8.86	9.60
318	500 x 500	11.08	12.39	13.27
405	600 x 600	15.22	16.72	17.74
Suitable for tiles		✓		
Suitable for tiles and pavers			✓	✓

Load 40 kN*

Custom made: within 14 days of ordering

* Concrete load min. 4 cm

DC Multi-Line

Heights: 60 - 80 - 100 mm

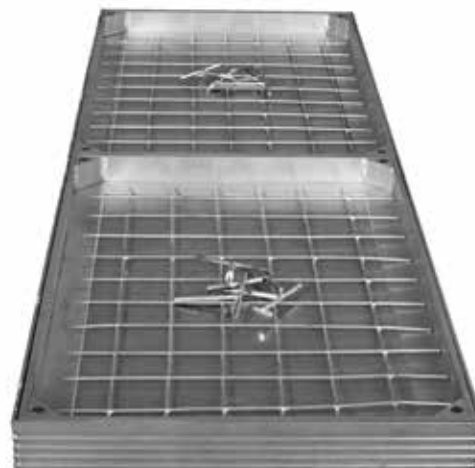
We want to provide a solution for the problem when a utility duct with electricity, water, compressed air, etc. is present.

The combination is solely possible with the Pro-Line series and the DC-Euromaster. Both types are not only odour, gas and waterproof, but at the same time the filling cover is screwed to the outer frame.

The recessed covers are equipped with three seals according to the latest engineering standards: Two seals at the base and a T rubber incorporated in the side of the frame.

The T rubber has three functions.

- Prevents dirt residue between the filling cover and the frame.
- Due to the rubber's elasticity, tension is avoided between the filling cover and the frame.
- It provides an additional odour barrier.



Gas proof



Smell proof



Waterproof

Information and properties

- Frame and cover are made of extruded aluminum profile and are easy to open with the lifting keys. At the bottom of the frame, a pre-mounted adapter can be connected to a PVC outlet pipe.
- Application: indoor and outdoor use.
- The cover is screw tight.
- The inspection cover is standard equipped with a reinforcement mesh.
- The bottom is made of a 3mm galvanized steel plate (on request: bottom plate in 3mm aluminum).



Multi-Line Pro - Standard height			
Type	Frame dimensions height	Tiles	Tiles & pavers
MLP 60	60mm	✓	
MLP 80	80mm		✓
MLP 100	100mm		✓

Custom made: within 14 days of ordering

Stahlo Deck Light-Line

Heights: 72 - 100 mm

The Stahlo Deck Light-Line series is a specially designed galvanised recessed cover with the cover placed freely in the outer frame.

The specially elevated profile makes the cover particularly robust and the conical side surfaces for the recessed cover ensure that the cover will never stick when opening or closing.



Smell proof

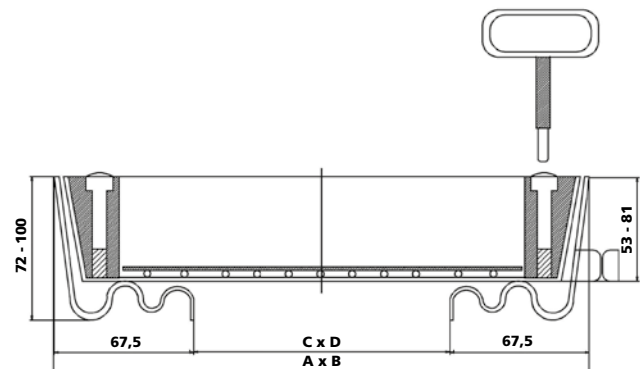


Waterproof



Information and properties

- The frame and cover are made of 2mm steel plate. The recessed cover is very easy to open with the lifting keys.
- Suitable for tiles and pavers.
- Application: outdoor use.
- The cover is not screw tight.
- The cover has anchors on the outside frame.
- A reinforcement mesh of 10mm twisted steel is wire cross-welded on the bottom.
- Surface finish: hot-dip galvanized.



Stahlo Deck Light-Line			SDL 72	SDL 100
Type	Clear opening C x D (mm)	Frame size A x B (mm)	Weight (k)	Weight (kg)
SDL 30	300 x 300	435 x 435	10.50	11.20
SDL 40	400 x 400	535 x 535	13.50	14.36
SDL 45	450 x 450	585 x 585	17.00	17.94
SDL 50	500 x 500	635 x 635	18.00	19,02
SDL 60/40	600 x 400	735 x 535	18.00	19.80
SDL 60	600 x 600	735 x 735	21.50	22.68
SDL 70	700 x 700	835 x 835	25.00	26.36
SDL 80	800 x 800	935 x 935	33.50	35.00
SDL 90	900 x 900	1035 x 1035	38.00	38.68
SDL 100/60	1000 x 600	1135 x 735	33.50	35.00
SDL 100	1000 x 1000	1135 x 1135	45.50	47.32
Suitable for tiles		✓		
Suitable for tiles and pavers			✓	✓

Load 125 Kn*

Custom made: within 14 days of ordering

* Concrete load min. 4 cm

Stahlo Deck Pro-Line

Heights: 72 - 100 mm

The Stahlo Deck Pro-Line series is a specially designed galvanized recessed covers with the cover screwed on to the outer frame.

The especially elevated profile makes the cover particularly robust and the conical side surfaces for the recessed cover ensure that the cover never stick when opening or closing.



Smell proof

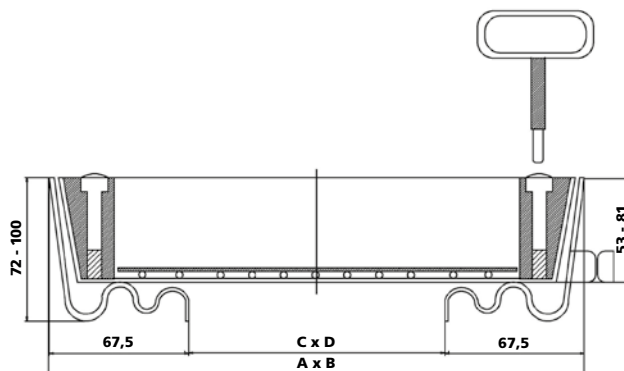


Waterproof



Information and properties

- The frame and cover are made of 2mm steel plate. The recessed cover is very easy to open with the lifting keys. Stainless steel Allen bolts connecting the cover and frame.
- Suitable for tiles and pavers.
- Application: outdoor use.
- The cover is screw tight.
- The cover has anchors on the outside frame.
- A reinforcement mesh of 10mm twisted steel is wire cross-welded on the bottom.
- Surface finish: hot-dip galvanized.



Stahlo Deck Light-Line			SDP 72	SDP 100
Type	Clear opening C x D (mm)	Frame size A x B (mm)	Weight (kg)	Weight (kg)
SDP 30	300 x 300	435 x 435	10.50	11.20
SDP 40	400 x 400	535 x 535	13.50	14.36
SDP 45	450 x 450	585 x 585	17.00	17.94
SDP 50	500 x 500	635 x 635	18.00	19.02
SDP 60/40	600 x 400	735 x 535	18.00	19.80
SDP 60	600 x 600	735 x 735	21.50	22.68
SDP 70	700 x 700	835 x 835	25.00	26.36
SDP 80	800 x 800	935 x 935	33.50	35.00
SDP 90	900 x 900	1035 x 1035	38.00	38.68
SDP 100/60	1000 x 600	1135 x 735	33.50	35.00
SDP 100	1000 x 1000	1135 x 1135	45.50	47.32
Suitable for tiles		✓		
Suitable for tiles and pavers			✓	✓

Load 125 kN*

Custom made: within 14 days of ordering

* Concrete load min. 4 cm

Top Pro-Line

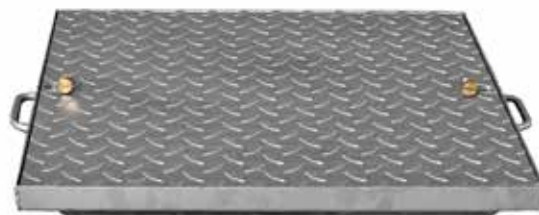
Height: 52 mm

The Top Pro-Line series is a robust hot-dip galvanized recessed cover, which is finished with an anti-slip plate on the exposed side.

During assembly, the EPDM rubber seal is compressed with brass screws on the Top-Line, providing an smell and waterproof cover for the recessed cover.

As standard, 2 to 4 anchors are fitted to the outer frame.

As standard, the recessed covers are delivered with 2 to 4 lift keys (number of lift keys depending on the format).



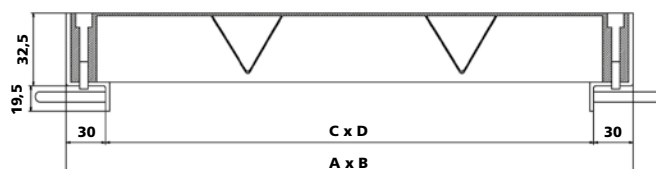
Smell proof



Waterproof

Information and properties

- The frame is constructed with 3 mm sheet steel and the cover made with a robust anti-slip diamond plate 5/7 can be opened very easily with the special brass bolts that connect the cover to the frame.
- Application: outdoor use.
- The recessed cover hatch is odour and waterproof due to a rubber EPDM seal.
- The recessed cover is screw-tight.
- On the outside, the recessed cover is fitted with securing anchors.
- On the inside, the recessed cover is fitted with reinforcements welded to the bottom.
- Surface treatment: Hot-dip galvanized. In accordance with the standard NBN EN ISO 1461.



Top-Line Pro			
Type	Clear opening C x D (mm)	Frame dimension A x B (mm)	Weight (kg)
SDT 30	300 x 300	360 x 360	8.86
SDT 40	400 x 400	460 x 460	13.79
SDT 50	500 x 500	560 x 560	16.52
SDT 60	600 x 600	660 x 660	21.06
SDT 70	700 x 700	760 x 760	27.42
SDT 80	800 x 800	860 x 860	31.58
SDT 90	900 x 900	960 x 960	37.55
SDT 100	1000 x 1000	1060 x 1060	44.25

Load 30 Kn*

Custom made: within 14 days of ordering

* Concrete load min. 4 cm



How to install

1



PLACE

Place the closed cover in the manhole. Apply the concrete filling to the edges of the frame evenly but generously. Make certain that there are no air pockets in the concrete, as these may adversely affect the density of the cover or bend under a load. Take into account the final finish layer. Use the level to take the cover to the right height.

2



OPEN

Give the concrete plenty of time to harden (at least 48 hours) and open the cover when the concrete is 90% hard. Remove any concrete or other residue on the frame or recessed cover.

3



FILL

To fill the cover, apply the concrete evenly and place the reinforcement mesh in the right position: make sure it doesn't touch the bottom. Again take into account the thickness of the finish layer.

4



DETAILS

Lay the pavers, tiles or other finish and fill the joints

Safety instructions

- Always place the cover horizontally.
- Protect the floor surface around the manhole during installation.
- Prevent accidents by not leaving the manhole or shaft access open unattended during the installation work. Make sure that the area is inaccessible to children.
- Covers with two lifting points must be lifted by two

persons. Covers with four lifting points must be lifted by four persons. Never lift a cover manually with ropes, this will result in back and neck injuries.

- In addition to the above instructions, observe the safety instructions and conditions of the relevant country.

Extra Info

Quick-lifter

Information and properties

- As the manufacturer, MPP always advises to open and clean the installed covers twice a year. As a result, it may seem that the cover is stuck, even though it is actually obstructed and simply needs a lift. MPP covers will never stick.
- To lift the cover in this case, MPP has designed the Quick lifters. These lift keys will automatically lift the cover when screwed into the four provided lifting points. Quick lifters make it very easy to lift the recessed covers.
- All the inspection covers are supplied with 2-4 lift keys depending on the size and reinforcement mesh.



Quick lifter			
Type	Used for	Length (mm)	Weight (kg)
QL-001	DC Light-Line	150	0.200
QL-002	DC Pro-Line	150	0.200
QL-002	Stahlo Deck	150	0.200

Tests and warranty

- Before being marketed, all covers are subjected to strict internal quality controls. Their resistance and strength are also tested by independent European institutions. We will provide you with the necessary certificates upon request.
- The table below shows where the covers can be used for information purposes only. The specifications documents must be followed for more detailed requirements.



Load class max kN	15		40	75	125
DC-40 Light Line	X				
DC-60 Light Line	X	X	X		
DC-80 Light Line	X	X	X		
DC-100 Light Line	X	X	X		
DC-40 Pro-Line	X				
DC-60 Pro-Line	X	X	X	X	
DC-80 Pro-Line	X	X	X	X	
DC-100 Pro-Line	X	X	X	X	
DC-80 Euromaster	X	X	X	X	X
DC-100 Euromaster	X	X	X	X	X
DC-120 Euromaster	X	X	X	X	X
DC-60 Tube Light-Line	X	X	X		
DC-80 Tube Light-Line	X	X	X		
DC-100 Tube Light-Line	X	X	X		
DC-60 Tube Pro-Line	X	X	X	X	
DC-80 Tube Pro-Line	X	X	X	X	
DC-100 Tube Pro-Line	X	X	X	X	
Multi-Line	X	X	X	X	
Stahlo-deck 75 Light-Line	X	X	X	X	X
Stahlo-deck 100 Light-Line	X	X	X	X	X
Stahlo-deck 75 Pro-Line	X	X	X	X	X
Stahlo-deck 100 Pro-Line	X	X	X	X	X
Top Pro-Line	X				

Channel drainage



Alu Side Drain & Accessories

Heights: 40 - 73 mm

The Alu Side Drain is a high quality extruded aluminum profile with integrally designed slot drain and drainage channel.

The Alu Side Drain comes fitted with a pre-assembled 'MPP-click system.' This feature not only allows for automatic alignment during installation, but is also waterproof and extremely fast.

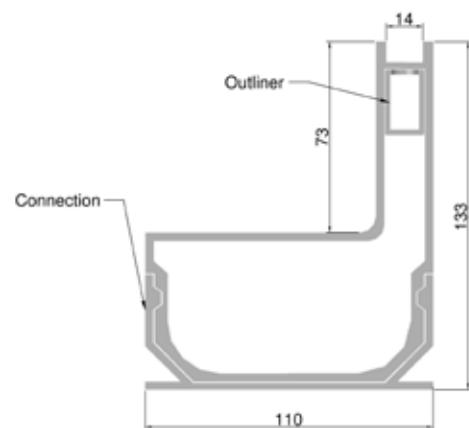
The profile is completely anodised. This prevents oxidation at the cutting or milling seams. We call this 'full' anodising.

All inspection covers take the design into consideration and both accessories include continuous slots. The Alu Side Drain therefore creates a singular whole without visual interruption. Connecting pieces are also made from aluminum. The Alu Side Drain allows the contractor to work quickly and efficiently while saving cost which also results in a win-win situation.



Information and properties

- Extruded aluminum profile design as a single unit with continuous 10x25mm lengthwise inlet slots.
- The aluminum profile is provided with a 'complete' 15 µm anodised layer which makes the profile durable and corrosion-resistant.
- Application: outdoor use for garage doors, terraces, driveways and around ponds or swimming pools.
- Suitable for tiles, paving stones must be shortened.
- The standard pre-mounted 'outliner' ensures perfect alignment and a quick, waterproof assembly.
- Custom solutions available in both the visible design as well as the length.



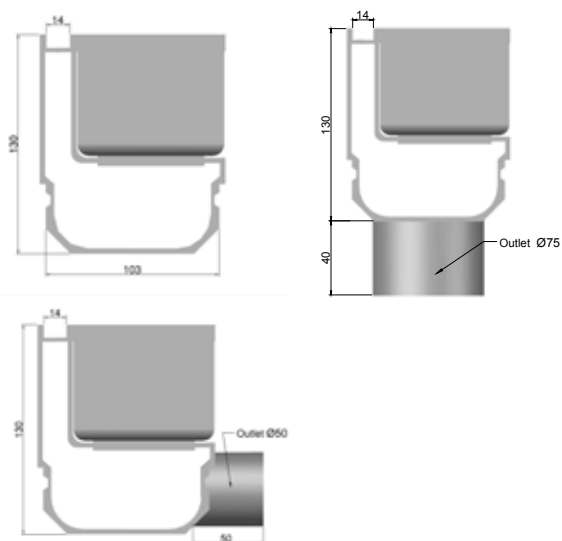
Alu Side-Drain		40		73	
Type	Length (mm)	Overall height (mm)	Weight (kg)	Overall height (mm)	Weight (kg)
ASD-500	500	83	1.607	133	2.060
ASD-1000	1000	83	3.125	133	4.120
ASD-2500	2500	83	8.037	133	10.300
ASD-5000	5000	83	16.075	133	20.600

Inspection covers



Information and properties

- Extruded aluminum standard inspection cover with continuous 10x25mm lengthwise inlet slots. This ensures no visual interruption.
- The inspection cover is provided with a 'complete' 15 µm anodised coating which makes the profile durable and orrosion-resistant.
- Application: outdoor use for balconies, garage doors, patios, etc.
- Suitable for tiles. When using paving stones, the stones must be shortened
- Accessories: set of lifting keys
- Horizontal + vertical: easy cleaning of connection for the water discharge is also provided.



Standard		40	73
Type	Length (mm)	Weight (kg)	Weight (kg)
ASDI	250	1.400	1.920

Horizontal discharge		40	73
Type	Length (mm)	Weight (kg)	Weight (kg)
ASDIHU	250	1.415	1.920

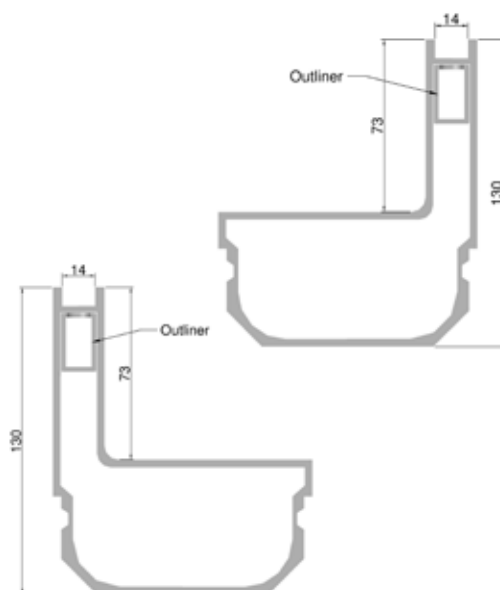
Vertical discharge		40	73
Type	Length (mm)	Weight (kg)	Weight (kg)
ASDIVU	250	1.415	1.920

Corners



Information and properties

- Extruded aluminum internal (A) and external corner (B) connection with continuous 10x25mm lengthwise inlet slots. This ensures no visual interruption.
- The inspection cover is provided with a 'complete' 15 µm anodised coating which makes the profile durable and corrosion-resistant.
- Application: outdoor use for balconies, garage doors, patios, etc. In locations where an internal corner connection is applicable.
- Suitable for tiles. When using paving stones, the stones must be shortened.



Internal corner			40	73
Type	Length in L (mm)	Install. height (mm)	Weight (kg)	Weight (kg)
ASDINW	500/500	130	3.125	4.120

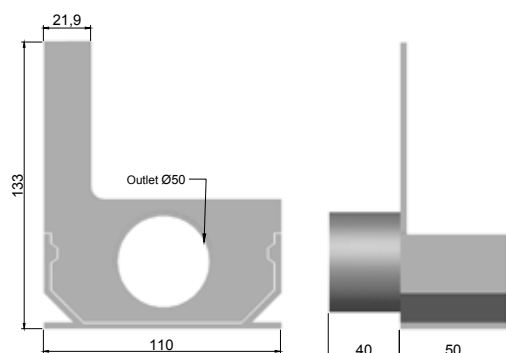
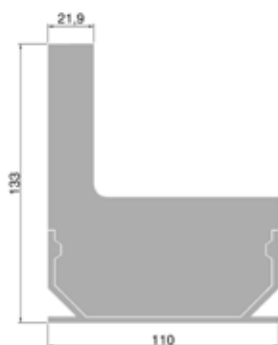
External corner			40	73
Type	Length in L (mm)	Install. height (mm)	Weight (kg)	Weight (kg)
ASDUNW	500/500	130	3.125	4.120

End pieces



Information and properties

- Aluminum closed end pieces designed to provide the Side-Drain with a waterproof seal on the right and left sides.
- The end pieces are finished with a 'complete' 15 µm anodised coating which makes the product durable and corrosion-resistant.
- Application: easy to assemble to the Side-Drain and on all Side-Drain type inspection covers.



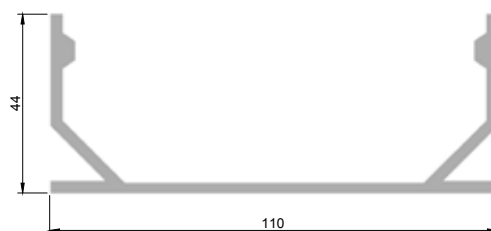
End pieces	40	73
Type	Weight (kg)	Weight (kg)
ASDEL	0.125	1.415
ASDER	0.125	1.415
ASDEL-50	0.140	1.145
ASDER-50	0.110	1.145

Connectors



Information and properties

- The Side-Drain comes standard with the required connectors. However, extra connectors are sometimes desired. We offer the possibility to purchase these separately.
- The connectors are finished with a 'complete' 15 µm anodised coating which makes the product durable and corrosion-resistant.
- Application: easy to assemble to the Side-Drain and on all Side-Drain type inspection covers.



Connectors	40	73
Type	Weight (kg)	Weight (kg)
ASDVS	0.115	0.115

Alu Side Line & Accessories

Height: 65 mm

The discretion offered by a slot-drainage system is being chosen more often for a terrace or driveway. With this in mind, MPP developed a unique design in the world of channel drainage.

The Alu Side Line is a high quality extruded aluminum profile suitable for installation on a polymer or plastic drainage channel with a clear opening of at least 100mm in the width.

With a provisional usable height of 65mm, adequate space is provided for tiles. When using paving stones, the height of the stones must be adjusted.

The Alu Side Line is protected by an anodised layer which is applied only after construction to ensure complete anodising of the profile. This prevents oxidation at the cutting or milling seams. We call this 'full' anodising.

In addition to the Alu Side Line, we also offer several accessories including the Alu Side Line inspection cover and the Alu Side Line sand trap. Esthetics were again considered in the design and both accessories include a continuous slot. The Alu Side Line slot drain creates a single continuous whole, without visual interruption.

To meet the strictest esthetic requirements of architects, contractors and end users, as well the internal as the external corners are available.

The standard pre-assembled 'outliner' on the side of the profile allows several profiles to be connected easily. This offers not only a significant time savings for the contractor, but also an unprecedented aesthetic finish.

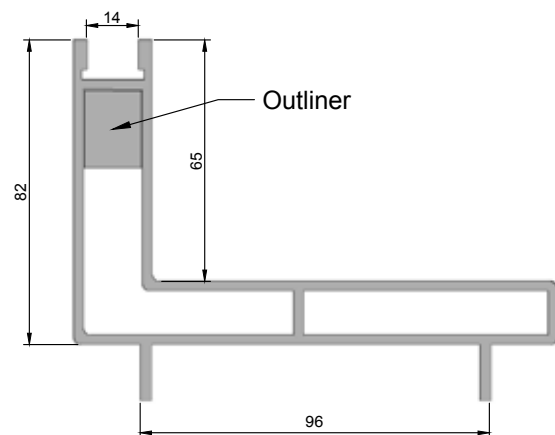


Information and properties

- Extruded aluminium top unit with 10x25mm lengthwise inlet slots.
- Suitable for installation on a polymer or plastic drain with a channel width of max. 100mm.
- The aluminium profile is provided with a 'complete' 15 µm anodised coating which makes the profile durable and corrosion-resistant.
- Application: outdoor use for garage doors, terraces, car parks and around ponds or swimming pools.
- Suitable for tiles. When using paving stones, the stones must be shortened.
- The standard pre-assembled 'outliner' alu block ensures perfect alignment of the top unit.
- Custom solutions available.



Alu Side-Line			
Type	Length (mm)	Overall height (mm)	Weight (kg)
ASL-500	500	82	1.570
ASL-1000	1000	82	3.130
ASL-2500	2500	82	7.813
ASL-5000	5000	82	15.650

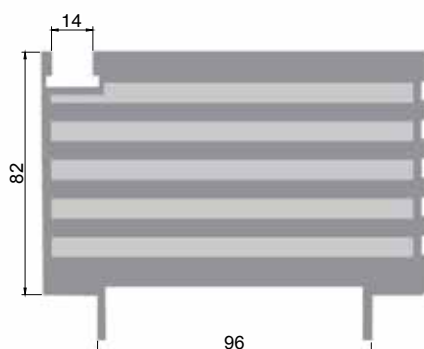


Inspection covers



Information and properties

- Extruded aluminum inspection cover with continuous 10x25mm lengthwise inlet slots.
- Suitable for attachment to the Alu Side Line channel drainage profile to allow the intended drainage channel to be easily cleaned.
- The inspection cover is provided with a 'complete' 15 µm anodised coating which makes the profile durable and corrosion-resistant.
- Application: outdoor use for garage doors, terraces, car parks and around ponds or swimming pools.
- Suitable for tiles. When using paving stones, the stones must be shortened.



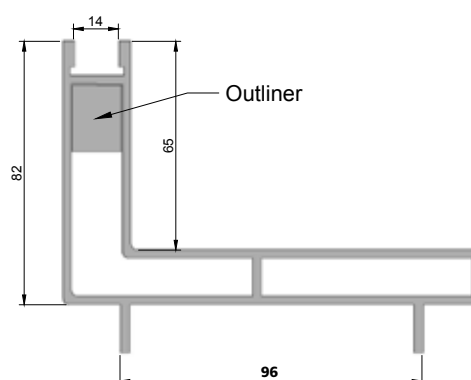
Alu Side-Line Pro 65 - Inspection cover			
Type	Length (mm)	Overall height (mm)	Weight (kg)
ASLI-250	250	82	1.680
ASLZ-500	500	82	3.360

Corners



Information and properties

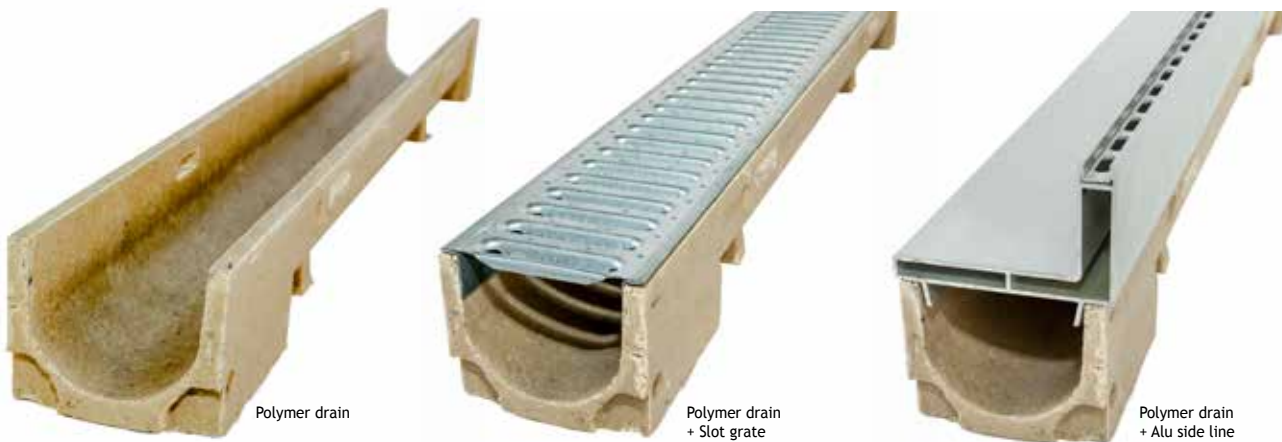
- Extruded aluminum internal (A) and external corner (B) connection with continuous 10x25mm lengthwise inlet slots.
- Suitable for attachment to the Alu Side-Line channel drainage profile.
- The inspection cover is provided with a 'complete' 15 µm anodised coating which makes the profile durable and corrosion-resistant.
- Application: outdoor use for garage doors, terraces, car parks and around ponds or swimming pools. In locations where the corner connections are applicable.
- Suitable for tiles. When using paving stones, the stones must be shortened.



Alu Side-Line Pro internal corner connection			
Type	Length in L (mm)	Overall height (mm)	Weight (kg)
INW	500/500	82	3.360

Alu Side-Line Pro external corner connection			
Type	Length in L (mm)	Overall height (mm)	Weight (kg)
UNW	500/500	82	3.360

MPP Polymer drain



Information and properties

- The strength and low weight of the MPP drain channel makes it suitable for water discharge in and around homes, garage doors, terraces and driveways.
- These non-gradient channels are available in various widths, in 1m or 0.5m sections. The channels are assembled together by a tongue-in-groove connection. The surface grate can be selected as required by both the functional as well as esthetic factors.
- The pressed design of the slot grate ensures unparalleled quality.
- The FIX-locking system also allows easy installation as well as removal for cleaning of the polymer channel.
- Various designs are available including stainless steel, copper, brass and cast iron.
- The polymer channel MPP-Drain can be assembled to the Alu Side Line and inspection covers.
- For technical details regarding the Alu Side Drain and inspection covers, please refer to the relevant pages for the necessary information.



Polymer drain					
Type	L (mm)	H (mm)	Weight (kg)	Vert discharge	Unit package without grate
SB100 B=100 D=125	1000	60	5.5	dia 110	120 pcs.
SB100 B=100 D=125	1000	80	7.3	dia 110	90 pcs.
SB100 B=100 D=125	1000	100	4.6	dia 110	-

Slot grate					
Grate Type	Material	L (mm)	Slot width (mm)	Weight (kg)	Class
Slot grate	Galvanised	1000	10	1.6	A15
Slot grate	Galvanised	500	10	0.5	A15
Slot grate	Galvanised	1000	6	1.5	A15
Slot grate	Galvanised	500	6	0.8	A15

Accessories



Odour trap

Dia	For sand trap	Weight (kg)
110	SB100	0.100

Also available with leaf guards.



Polymer sand trap

Type	L (mm)	H (mm)	Weight (kg)	Discharge
SB100	500	285	12.00	110

Include a galvanised bin.



Start and end piece

Type	H (mm)	Weight (kg)	Integrated discharge
SB100	60	0.100	-
SB100	80	0.100	dia 50
SB100	100	0.100	dia 50/70/80

Alu Side Light-Line & Accessories

Height: 68 mm

Based on our Pro-Line, the design department at Metal Projekt Polska developed a slot drainage top unit where the aesthetic finish is somewhat less important and the economic aspect plays a greater role.

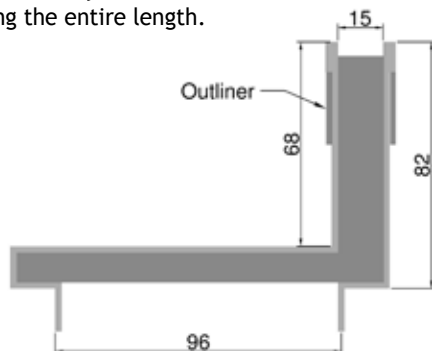
Like our Pro version, the Alu Side Light-Line is produced from high-quality extruded aluminum profile, however this slot drain has two separate aluminum profiles which are welded together through individual joints.

The Alu Side-Line features a single continuous slot over the entire length and is not equipped with an anodised finish. The Alu Side Light-Line cannot be used in combination with design slot drains. For such applications, please refer to the Alu Side Line-Pro.



Information and properties

- Top unit from two-piece extruded aluminum connected together by welded joints.
- Suitable for installation on a polymer or plastic drain with a channel width of max. 100mm.
- Application: outdoor use for terraces.
- Suitable for tiles. When using paving stones, the stones must be shortened.
- The top unit is only available with a slot along the entire length.



Alu Side Light-Line 68

Type	Length (mm)	Overall height (mm)	Weight (kg)
ASLL-68	1000	82	1.970

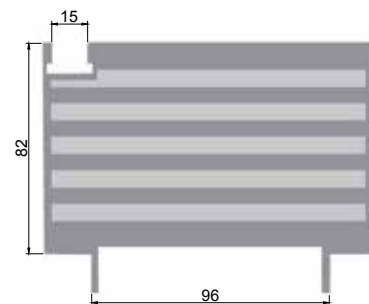
Custom designs not available

Slot drain



Information and properties

- Extruded aluminum inspection cover.
- Suitable for attachment to the Alu Side Light-Line channel drainage profile to allow the intended drainage channel to be easily cleaned.
- Application: outdoor use for terraces.
- Suitable for tiles. When using paving stones, the stones must be shortened.
- Accessories: set of lifting keys.



Inspection cover

Type	Length (mm)	Overall height (mm)	Weight (kg)
ASLLI-250	250	82	1.680
ASLLI-500	500	82	3.360

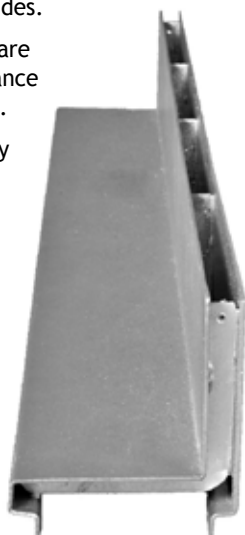
Galva Side Line & Accessories

Lateral top unit with inlet slot on the side. Suitable for assembly on plastic and polymer channel elements with a clear opening of at least 100mm in width.

The Galva Side Line is created by a folded steel profile welded together using intermediate joints. To achieve perfect alignment, standard 'outliners' are fitted to the sides.

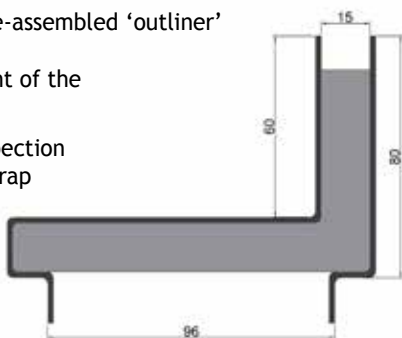
After finishing, the top units are hot-dip galvanized in accordance with standard BS EN ISO 1461.

The Galva Side Line can easily be customised according to the customer needs, both in height and width.



Information and properties

- Top unit produced from hot-dip galvanized steel with inlet slot on the side.
- Suitable for installation on a polymer or plastic drain with a channel width of max. 100mm.
- The top unit is hot-dip galvanized in accordance with standard BS EN ISO 1461. This makes the profile durable and corrosion-resistant.
- Application: outdoors for garage doors, terraces, car parks and around ponds or swimming pools.
- The standard pre-assembled 'outliner' ensures perfect alignment of the top unit.
- Accessories: inspection cover and sand trap



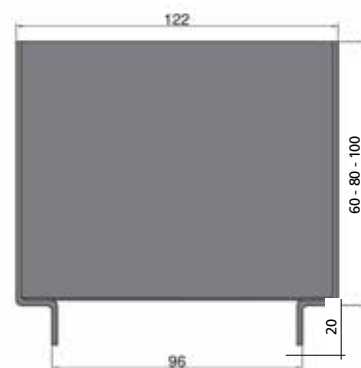
Galva Side Line			
Type	Length (mm)	Overall height (mm)	Weight (kg)
GSL-500	500	80	2.764
GSL-1000	1000	80	5.528
GSL-500	500	100	3.067
GSL-1000	1000	100	6.134
GSL-500	500	120	3.370
GSL-1000	1000	120	6.740

Inspection cover



Information and properties

- Inspection cover produced from hot-dip galvanized steel with inlet slot on the side.
- Suitable for attachment to the Galva Side Line channel drainage profile to allow the intended drainage channel to be easily cleaned.
- The maintenance cover is hot-dip galvanized in accordance with standard BS EN ISO 1461. This makes the profile durable and corrosion-resistant.
- Application: outdoors for garage doors, terraces, car parks and around ponds or swimming pools.



Inspection cover			
Type	Length (mm)	Overall height (mm)	Weight (kg)
GSLI-250/60	250	80	2.160
GSLI-250/80	250	100	2.690
GSLI-250/100	250	120	3.520
GSLZ-500/60	500	80	4.320
GSLZ-500/80	500	100	5.680
GSLZ-500/100	500	120	7.040

How to install

In this visualisation, we install the Alu Side Line on a polymer channel.
Because there are several manufacturers of polymer channels,
please refer to the installation instructions provided by your chosen supplier.

1



MEASURE

When installing the polymer channel, take the height of the Alu Side-Line into account. The end-piece must be installed 3mm below the surface to ensure proper drainage.

2



PLACE

The Alu Side-Line can be placed on the installed polymer channel or pre-assembled to the channel where required. The pre-assembled 'outliner' provided on each top unit provides automatic alignment which saves time for the contractor.

3



INSPECTION COVER

Install an inspection cover where necessary. We recommend installing an inspection cover at each end as well as over every discharge outlet to simplify cleaning.

4



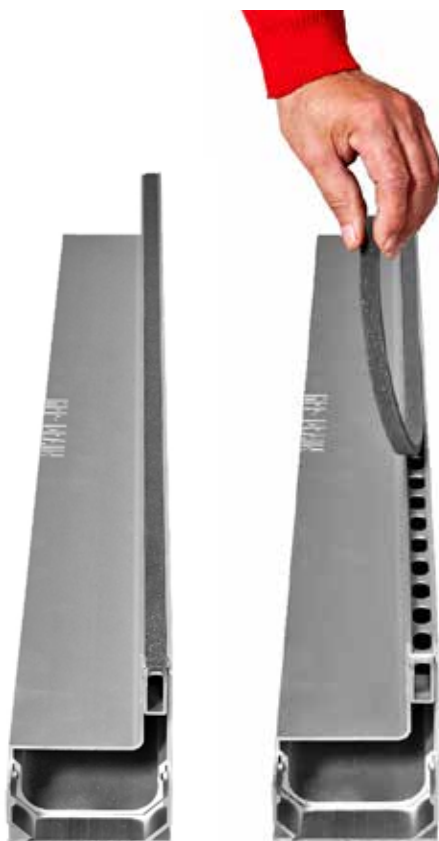
FILL

Wall up the polymer channel sufficiently and finish the tiles against the top unit. After installation, the Side Line or Side Drain is practically invisible, with no loss of functionality.

Extra Info

Protective strip

All Side Line pro, Side Drain and accessories include a removable protective strip on the top. This protective strip should only be removed after the paving stones or tiles have been grouted. This handy feature protects cement residue or debris from entering the drain during installation.



Side Drain with standard pre-mounted protective strip.

The protective strip is easy to remove after finishing.

Other colors






Slot drains from Metal Projekt Polska are not only available in "Full anodised", but for some time it has also been possible to finish the drainage elements in durable RAL colours for the justifiably demanding client, contractor or architect. This can be harmonised with the colour of the windows of the house or the terrace. Our dealers are experts in these matters and can provide further info.



Side-Line external corner in RAL 7043

Tests and warranty

- All channel drainage systems are not only subject to strict internal quality inspections before they are marketed, their strength and resistance are also tested at the European level by independent agencies. For copies of the necessary certificates, simply ask.
- An informative table indicating where channel drainage systems can be installed is provided below. Further details and instructions included in the specifications should be followed.

					
Belastungsklasse max kN	15		40	75	125
Alu Side Line Pro	X	X	X		
Alu Side Drain	X	X	X		
Alu Side Line-Light	X				
Galva Side Line	X	X	X	X	X



MPP METAL PROJEKT POLSKA

Ul. Zarnowiecka 5 - 42-445 Szczekociny - Poland
carl.j@metalprojektpolska.com - GSM +32 (0)499 513 344

www.metalprojektpolska.com